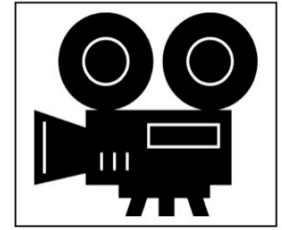




POLARIS 6X6 TRACKING VEHICLE



- ✿ The 6x6 Polaris Tracking Vehicle is based around a 500cc Polaris Sportsman, a 6 wheeled ATV with interchangeable 4 or 6 wheel drive.
- ✿ Having the rear tray situated above 4 wheels allows greater stability, drive & weight Capacity (370kg max) than a standard "quad" bike.

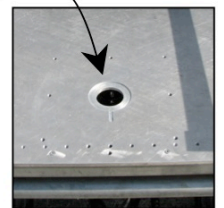


- ✿ The rear tray has been designed to allow easy rigging for various camera mounts - and includes a Moy Mount for instant attachment.
- ✿ A seat and Harness are provided for the camera operator and can be placed in a variety of positions both front and back of the bike.
- ✿ The bike comes with two types of tyres - Standard off road.
 - Low profile "turf" for tracking on tarmac or sensitive grass areas.

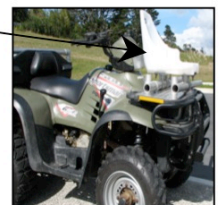
✿ "THE FINE PRINT"

- When booking the Polaris 6x6 advance notice must be given for the type of tyre required. Also please discuss the type of camera mount i.e. Hand Held/Bungy Rig/Steadicam.
- The Polaris 6x6 travels on a purpose built trailer complete with ramps. This trailer can be towed behind the bike but weight capacity is restricted To 700kg (inc trailer).
- Extra charges apply to fuel used.

Moy Mount



Front Mounted Seat



- ✿ For further information and booking please contact:

✿ Evan Pardington
 ✿ 021 503 910
 ✿ 09 479 9629
 ✿ coolhandevan@mac.com